

FORT WAYNE-BLUFFTON

TRANSMISSION LINE REBUILD PROJECT



Indiana Michigan Power (I&M) officials plan power grid improvements to increase reliability for customers in northern Indiana. The Fort Wayne- Bluffton Transmission Line Rebuild Project involves updating about 26 miles of electric transmission line, including 4 miles of new 69-kilo-volt (kV) about 12 miles of new double-circuit 69/138-kV power line and building a new substation.

WHAT

- The project involves:
- Updating approximately 26 miles of power line between Bluffton and Fort Wayne
 - Building a proposed 12-mile power line connecting Murray Substation with lines south of Bluffton. This double-circuit line is planned to operate at 69-kilovolts (kV) with one circuit built to 138-kV standards
 - Building a proposed 4-mile 69-kV power line to provide looped service between the Uniondale and Kingsland substations
 - Building Baer Substation in Fort Wayne, near the Baer Road and Baer Field Thruway intersection

WHY

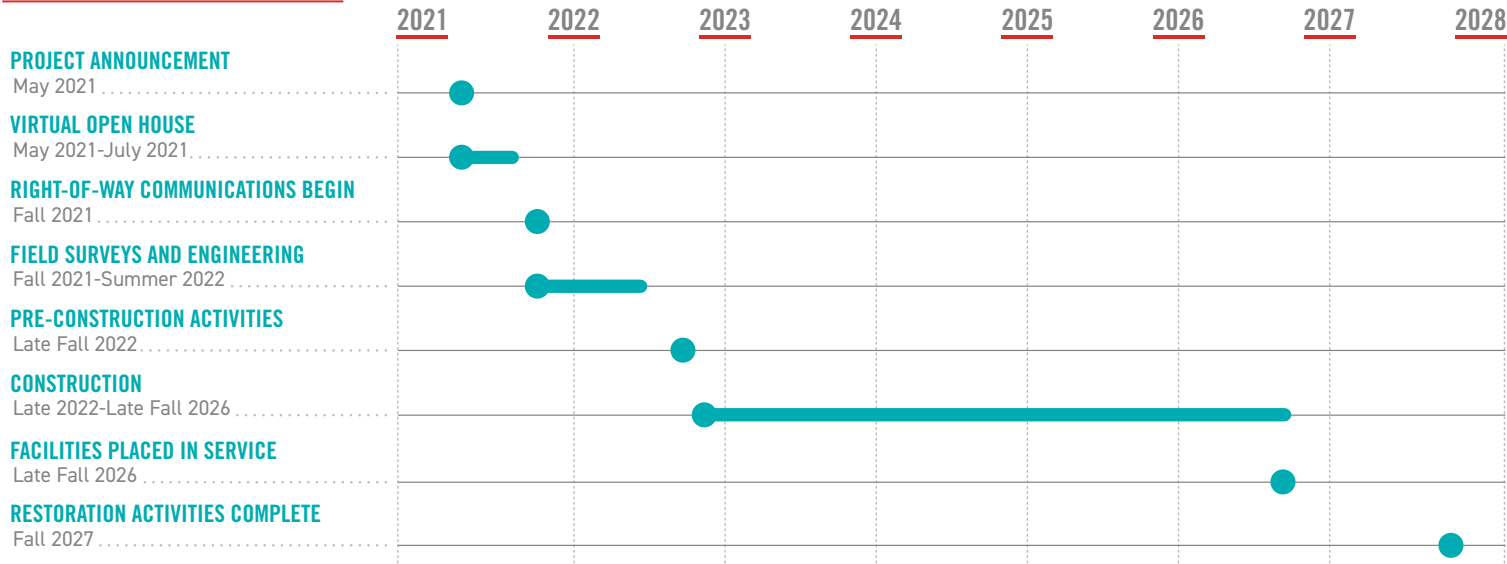
Crews plan to replace the deteriorating wooden poles from the 1950s with modern steel poles. This improvement reduces the need for frequent equipment maintenance and improves the line's operational performance. The proposed substation and new transmission lines help reduce the likelihood of larger, community sustained outages and ensures reliable electric service to the community.

WHERE

- The project area includes:
- Cities of Fort Wayne and Bluffton
 - Townships of Liberty Center, Ossian, Uniondale and Yoder
 - Counties of Adams, Wells and Allen



PROJECT SCHEDULE



*Timeline subject to change.

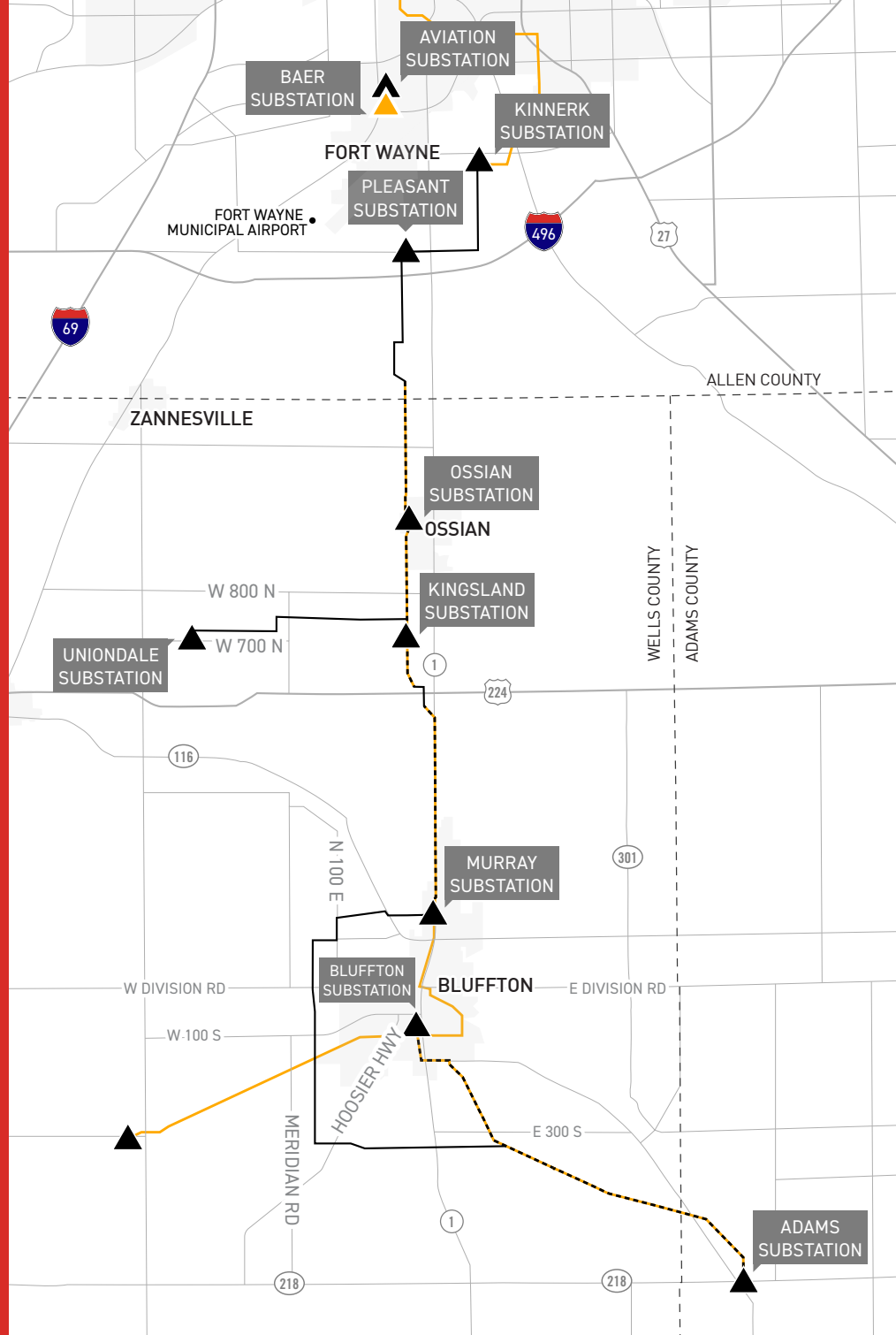
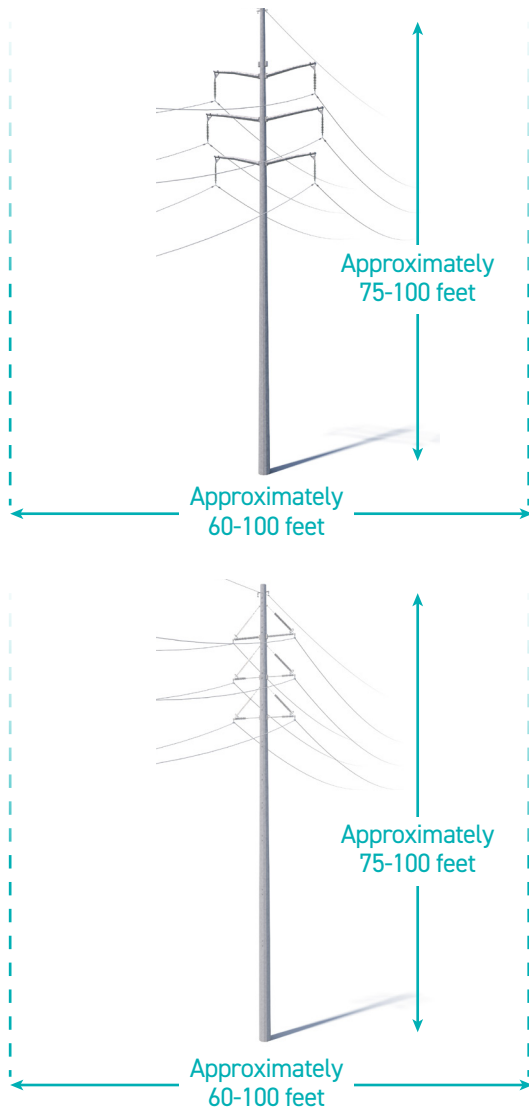
TYPICAL STRUCTURES

The project involves installing steel poles.

Typical Pole Height: **Approximately 75-100 feet***

Typical Right-of-Way Width: **Approximately 60-100 feet***

*Exact structure, height and right-of-way requirements may vary



FORT WAYNE-BLUFFTON TRANSMISSION LINE REBUILD PROJECT

- EXISTING TRANSMISSION LINE
- PROPOSED LINE ROUTE
- - - TRANSMISSION LINE TO BE REBUILT IN OR NEAR EXISTING ROUTE

- ▲ NEW SUBSTATION
- ▲ EXISTING SUBSTATION



I&M VALUES YOUR INPUT ABOUT THIS PROJECT. PLEASE SEND COMMENTS AND QUESTIONS TO:

✉ Indiana Michigan Power
I&M Outreach Team
P.O. Box 60
Fort Wayne, IN 46801

✉ IM_Outreach@aepp.com
☎ 833-441-2260
➡ IndianaMichiganPower.com/FortWayneBluffton

